



# MONTHLY MEMBERSHIP PROGRESS REPORT

Results as of: 5/31/2015

Multiple District 26

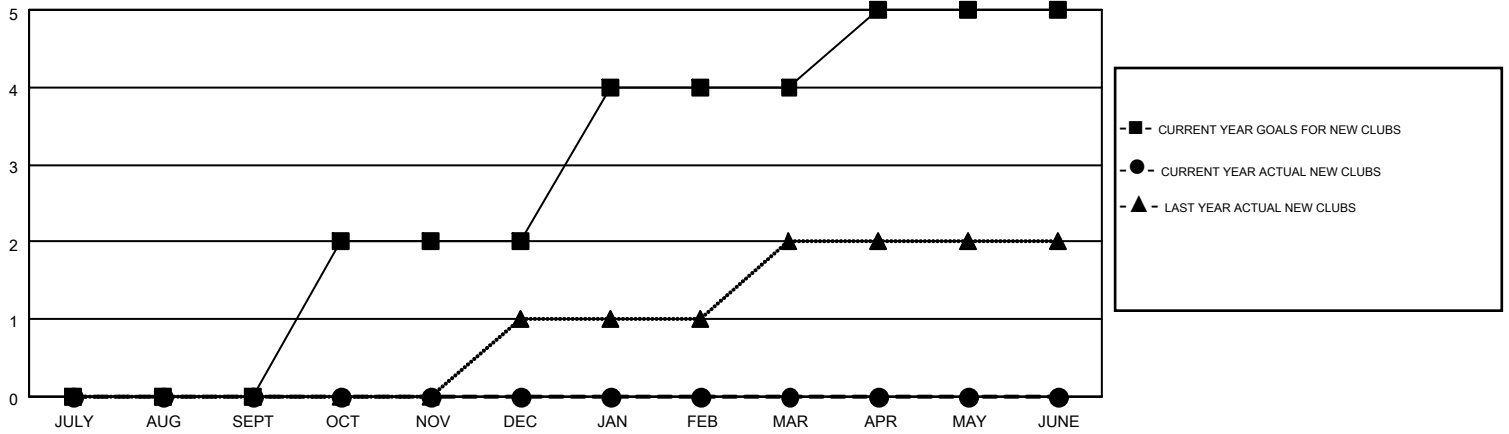
LOCATION: MISSOURI

GMT: HAL GRIFFIN

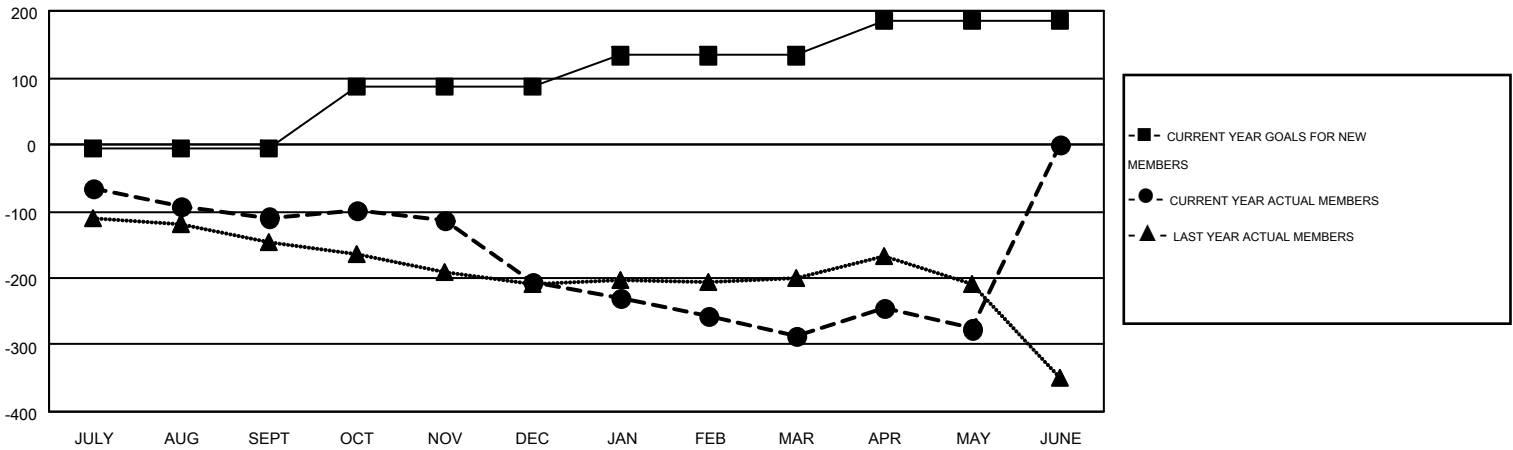
GMT CA 1

Clubs					Members				
RESULTS FOR 2014-2015					RESULTS FOR 2014-2015				
QUARTER	NEW CLUB GOAL	NEW CLUBS	DROPPED CLUBS	NET GAIN/LOSS	QUARTER	NEW MEMBER GOAL	CHARTER AND NEW MEMBERS ADDED	DROPPED MEMBERS	NET GAIN/LOSS
JULY/AUG/SEPT	0	0	2	-2	JULY/AUG/SEPT	-7	219	328	-109
OCT/NOV/DEC	2	0	5	-5	OCT/NOV/DEC	94	183	279	-96
JAN/FEB/MAR	2	0	0	0	JAN/FEB/MAR	46	184	266	-82
APR/MAY/JUNE	1	0	0	0	APR/MAY/JUNE	53	146	135	11

GOALS AND ACTUAL NEW CLUBS CUMULATIVE



GOALS AND ACTUAL MEMBERS CUMULATIVE



DROPPED CLUBS: 7	215 CLUBS OF 360 ADDED 1 OR MORE NEW MEMBERS	<u>GENDER DISTRIBUTION</u>	
		MALE	7,085 (75.47%)
<u>DROPPED MEMBERS</u>	<a href="#">CLICK HERE FOR HEALTH ASSESSMENT DATA</a>	FEMALE	2,303 (24.53%)
DECEASED		140	FAMILY UNIT MEMBERS
CLUB CANCELLED	37	HEAD OF HOUSEHOLD	761
OTHER	831	NON-HEAD OF HOUSEHOLD	792
<b>TOTAL</b>	<b>1,008</b>		